

57 Court Street

Downtown BK - 2nd Floor - Retail/F&B



dreamscape



Located on the corner of Court and
Joralemon Streets

A Two-Level Flagship Opportunity at Prime Brooklyn Corner

**Ground Floor Entrance up
to a large Second Floor**

*Great for retail, full service
restaurants, entertainment, fitness, and
more*

*High ceilings on the ground and second
floors. Additional storage available in
sub-basement.*

Vertical Transportation in Place

dreamscape

57 Court Street

In the heart of

**Downtown
Brooklyn**

Adjacent to the

**Borough Hall
Subway & within
blocks of other
High-Volume
Stations**

Opportunity to join existing tenants

**Sephora, Soul
Cycle, and
Hot 8 Yoga**

**Incredible
Wraparound
Signage
Opportunity**

19 Foot Ceilings

**High Performing
Tenant-
Adjacencies**

dreamscape

Floor Plans

Ground Floor:

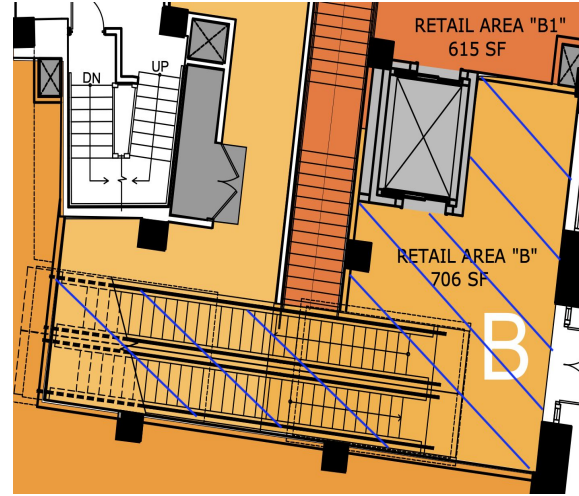
706 SF

Second Floor:

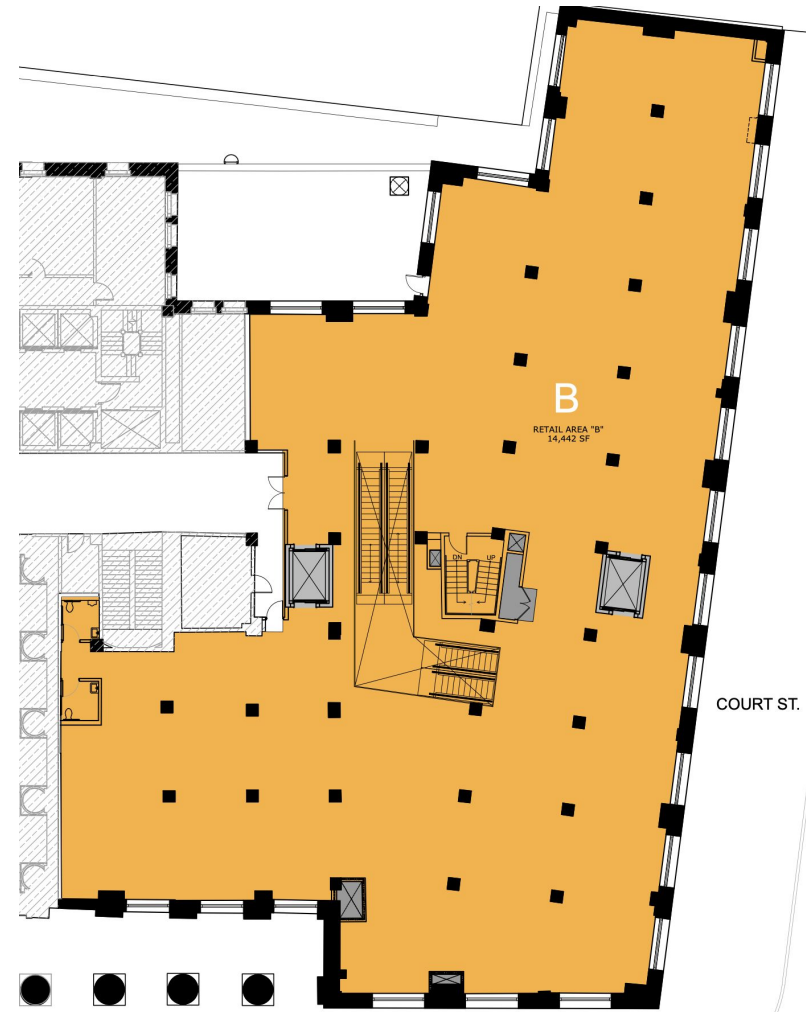
14,442

Ceiling Height:

19 Feet



GROUND FLOOR



SECOND FLOOR

57 Court Street

Scott Zinovoy

(201) 741-9307

szinovoy@dreamscapecos.com

Joshua Strauss

(917) 353-1900

jstrauss@dreamscapecos.com

dreamscape